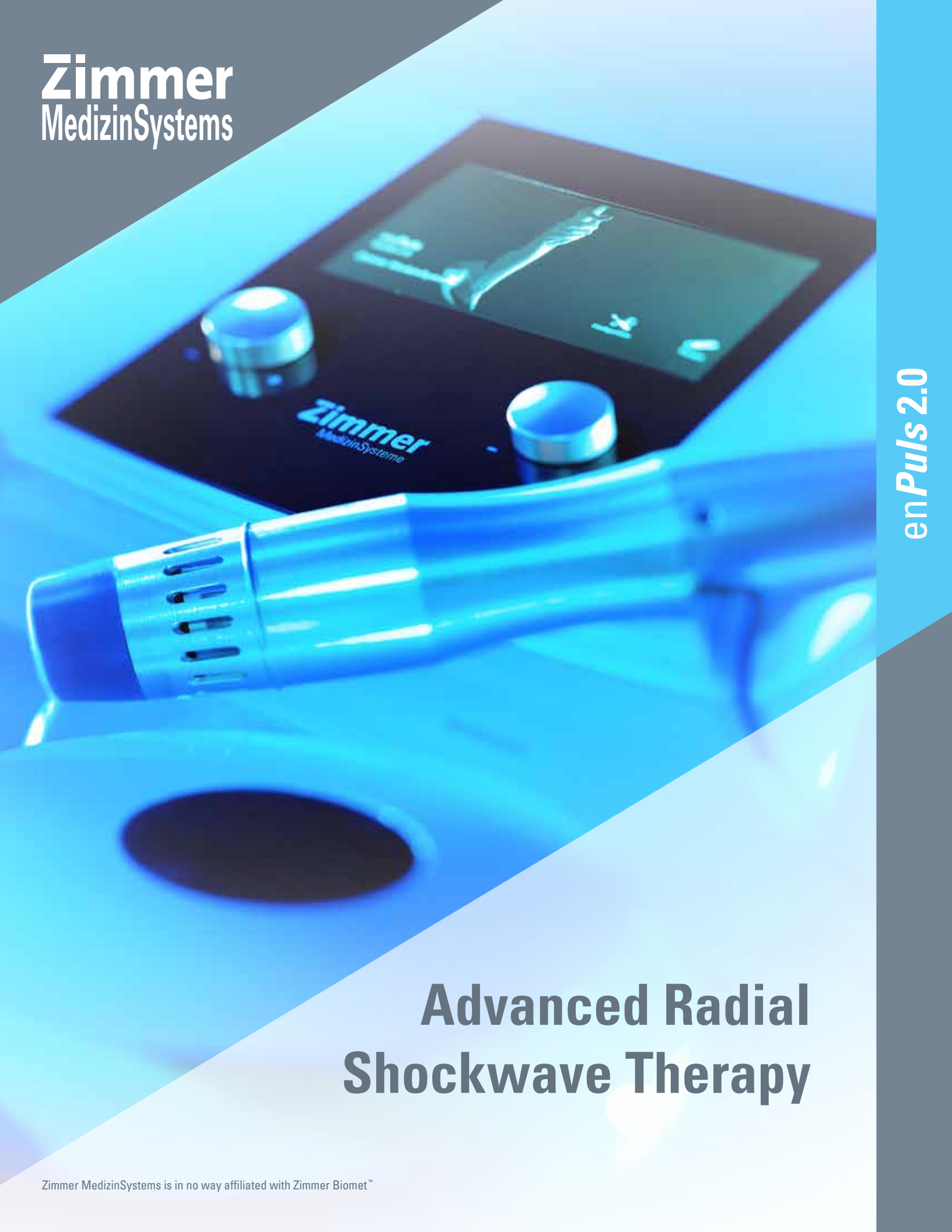


Zimmer
MedizinSystems



enPuls 2.0

Advanced Radial Shockwave Therapy

en*Puls* 2.0

the next generation

Advanced Radial Shockwave Therapy

An Effective Alternative For
Treating Chronic Soft Tissue Pain



en*Puls* 2.0 shown with optional *move* cart and hand piece holder

Principle of Radial Shockwave Therapy

The hand piece contains a projectile that is accelerated through the electromagnetic transfer of kinetic energy. This kinetic energy is then transformed into impact energy in the applicator head. The impact energy delivered from the applicator head results in radial pulses in the target tissue. Radial Shockwave Therapy provides an excellent alternative to treating muscle tissue. The energy treats muscle pain and helps to increase circulation in the target tissue.

Mechanical energy

The en*Puls* device delivers energy into the target tissue where traditional soft tissue therapy techniques cannot reach. This is all done with little or no stress on the therapist's hands. A heavy duty, ergonomic aluminum hand piece delivers optimal energy to the patient while providing optimal protection against vibrations to the therapist's hands.

Time savings and efficiency with better outcomes

Adding the en*Puls* Radial Shockwave Therapy unit to your facility will decrease the treatment time for chronic soft tissue pain patients and increase your efficiency. This results in better outcomes for you and for your patients.

Zimmer
MedizinSystems

Stimulating and gentle on the patient...

Exceptionally Powerful Technology

enPuls Softshot technology

enPuls creates unique radial pulses by using a projectile 5 times heavier than standard air compressor systems and a reduced final velocity upon contact with the applicator. Leveraging the force of the accelerator and the mass of the projectile, the enPuls system ensures efficient energy transfer from the handpiece to deep tissue structures, providing a comfortable, effective treatment experience for patients that surpasses comparable systems.

Increased patient comfort

Less pain, same energy – that's enPuls softshot technology. Energy is maintained by a longer pulse rise time. This eliminates the need for unpleasant high peak pressure amplitudes. The lower peak and longer rise time minimize the stinging and painful sensation that is normally associated with this type of therapy. Increased patient compliance results in easier treatments at higher energy levels, leading to successful therapy.

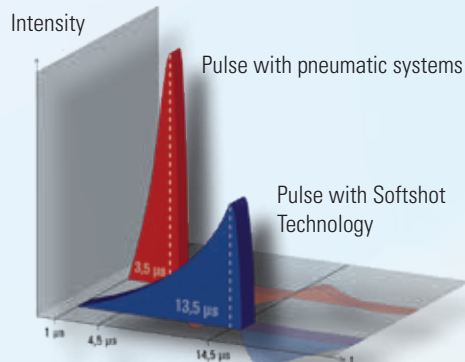
F=ma: Softshot Technology

Zimmer MedizinSystems electromagnetic technology uses a projectile that has a 5 times greater **mass** than pneumatic systems. This makes for equal **Force** using 5 times less **acceleration**.

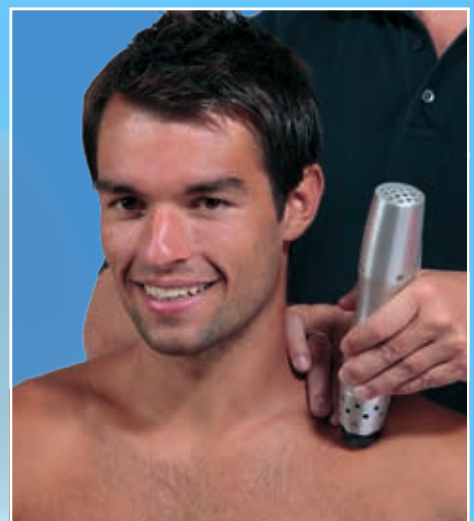
Less acceleration means a softer, more comfortable pulse on the surface of the skin. We call this **Softshot Technology**.



Pneumatic projectile (left) vs. enPuls 2.0 electromagnetic projectile (right) - 5 times heavier



Enhanced patient comfort due to longer rise time (pulse width) without the need for unpleasant high peak energy



enPuls 2.0

the next generation

Details

- 1 hand piece
- intuitive touchscreen operation
- energy levels from 60 to 185 mJ (comparable to 1-5 bar)
- pulse frequencies from 1 to 22 Hz
- burst mode for trigger point treatment
- positive/negative pulse counter with value preset
- SD card for memory, updates and service
- efficient energy transfer
- lower maintenance, longer lifetime
- unique, comfortable pulses (Softshot)

... efficient and easy to use

Ergonomic

The high mass applicator reduces strain on clinicians. The ergonomic aluminum hand piece with high mass and ample inertia provides appropriate energy transfer to the patient. It also affords optimal protection against vibration for the healthcare professional. The design allows for single-handed use, enabling the second hand to be free to adjust treatment parameters during the session.



Safe

Pulses are triggered using a foot pedal, ensuring targeted treatment and allowing the clinician to concentrate on hand positioning for the treatment.



Flexible

Applicator heads of varying sizes and shapes can be quickly changed out without the use of tools, allowing treatments to be adjusted as needed.



Mobile

An optional aluminum transport case containing all equipment and accessories offers mobility and convenience for treatment any time and anywhere.



Revolutionary interface design

The new en*Puls* touch screen interface is truly innovative, intelligently designed... and even fun to use.

Larger display surface

The 7" color touchscreen display is easy to read and to navigate with your fingertips.

2 Million Pulse Warranty

A powerful, mechanical energy generator with high percussion, digital control, and low mechanical wear provides for an extended lifetime of reliability and performance. We guarantee our hand piece for 2 million pulses.

No Air Compressor

The en*Puls* is completely portable for use between treatment rooms or on the road. There are no messy air compressors to drag, listen to or maintain.

en*Puls* 2.0

the next generation

Successful Therapy

Radial Shockwave Therapy:
Easy to operate
Quick results

The en*Puls* becomes an extension of your hands, delivering mechanical stimulation to the target tissue.

Radial Shockwave Therapy provides an excellent alternative for treating muscle tissue.

The energy treats muscle pain and help increase the circulation in the target tissue.

Easy-to-use and requires minimal preparation, enabling the practitioner to deliver efficient and effective treatments.

On average, Radial Shockwave Therapy is performed once or twice a week for a total of 5-6 sessions.

Most treatments are administered at 2,500 - 3,000 pulses and take less than 5 minutes per session.



Zimmer
MedizinSystems

Treat soft tissue pain in your office with this cost-effective, non-surgical alternative

It's had a tremendous effect on our practice, enabling patients to get better sooner.

– *D. Lipitz, Physical Therapist*

Pulsed wave therapy is a tremendous asset to my practice. It is the most effective treatment modality that I use to treat patients suffering from chronic foot pain unrelieved by traditional conservative treatments.

– *M. Cunha, Doctor of Podiatric Medicine*

Nothing I have used has been as significant as Radial Pulse Shockwave Therapy. It saves my hands.

– *T. Rodman, Chiropractic Physician*

After two back surgeries and one spinal cord pain stimulator did not relieve my pain, the doctors said I would just have to live with it. Thanks to this treatment, I feel I have recovered at least 80% of my quality of life.

- *J. Pieschacon, 73-Year-Old Patient*



enPuls 2.0

the next generation



enPuls 2.0 shown with optional aluminum transport case



enPuls 2.0 shown with optional move cart and hand piece holder

Zimmer MedizinSystems
3 Goodyear, Suite B
Irvine, CA 92618
(800) 327-3576
info@ZimmerUSA.com
www.ZimmerUSA.com
shop.ZimmerUSA.com

Zimmer
MedizinSystems

enPuls 2.0 Specifications

Technology	Compressor-free ballistic Radial Shockwave Therapy system with electromagnetic generator for projectile acceleration
Power Levels	60-185 mJ freely selectable in 10 mJ increments
Modes	Frequencies from 1 to 22 Hz 3 Burst modes (4 / 8 / 12 pulses)
Programs	7 preset programs, customizable
Controls	7" color touchscreen for all software operations Rotary control for energy level and for frequency Hand piece operation with multi-directional foot switch
Memory / Updates	SD card for favorites and customized programs (up to 120 entries) Firmware updates
Radial Shockwave Hand Piece	
	Ergonomic, with anodized aluminum housing and cooling fan
Generator	Electromagnetic, integrated
Dimensions	9.1" L, 2" diameter (max.)
Weight	ca. 1.87 lbs. (with cable)
Warranty	2,000,000 pulses
Applicator heads	Diameters of 6 / 15 (2 pieces) / 25 mm Changeable without tools
Power Consumption	100 - 240 V / 50/60 Hz, max. 250 VA
Dimensions	12.7 x 9.3 x 5.1 inches (L/W/H)
Weight	6 lbs. (without hand piece)
Package	Foot switch Mains cable Applicator head (6 / 15 (2 pieces) / 25 mm) 10 blue silicone caps 1 hand piece 1 bottle enPuls lotion
Options	Aluminum transport case move cart Holder for 1 hand piece